

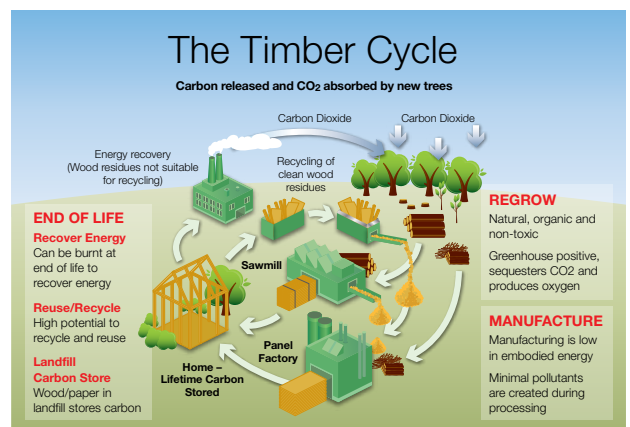


## Our commitment to a greener environment



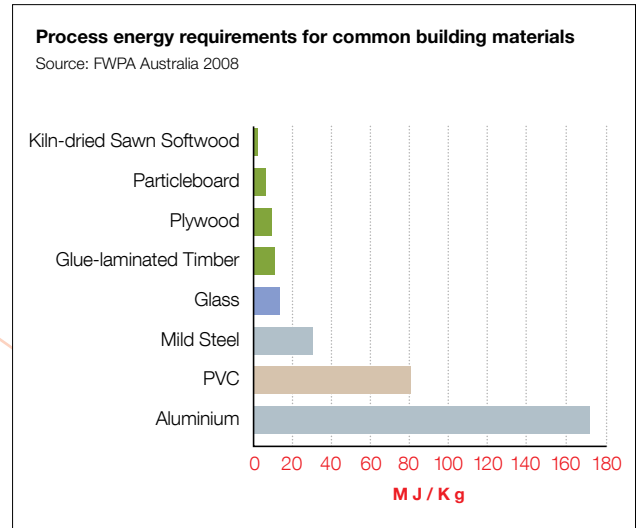
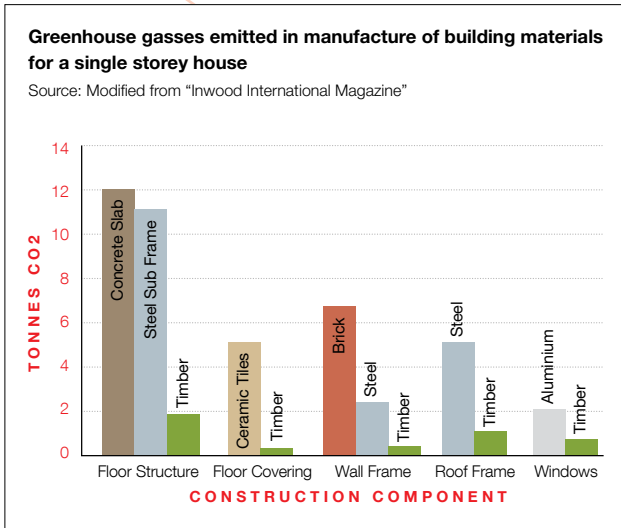
Hyne is leading the way in the Australian timber industry with environmentally friendly timber products that support Australia's targets for a lower carbon future. The greenhouse footprint of Hyne products shows that they continue to store carbon long after the timber is felled. With most of the carbon remaining locked in the wood even after end of life re-use, re-cycling or disposal to waste. We are also in the process of implementing realistic energy saving targets for each Hyne operation and location.

For building materials to be truly environmentally friendly, it's all about where they're sourced and the environmental impact of their manufacture. The simple fact is, responsibly sourced plantation timber products are one of only a few building materials that actually help to reduce greenhouse gas emission.





## Timber is the natural way to build



### Green Building

As a member of the Housing Industry Association (HIA), Hyne is a committed Greensmart Partner. The choice of Hyne timber products over alternative energy intensive building materials including concrete, masonry, steel and aluminium, has a substantial impact on carbon emissions. Research undertaken by the Forest and Wood Products Association found that 25 tonnes of carbon per average Australian home can be saved by choosing timber wherever possible.

Hyne is working with other producers and with the Australian Forestry Scheme (AFS) for review of the Mat 8 Sustainable Timber Guideline by the Green Building Council of Australia (GBCA) for the inclusion of Environmentally Certified forest products sourced from Plantation Forests managed to the Australian Forest Standard AS4708 (Int) – 2003 thus making these products eligible for green star points allocation.

### FOREST CERTIFICATION & CHAIN OF CUSTODY

#### Certified Forest Management

All of the softwood resource used in the production of Hyne's products is sourced from sustainably managed plantations in Queensland, New South Wales and Victoria. These forests are independently certified for compliance with the Australian Forest

Standard AS4708(Int)-2003 (AFS) under Australian Forest Certification Scheme. The AFS has mutual recognition by the Programme for the Endorsement of Forest Certification Scheme (PEFC). PEFC is the world's largest forest certification organisation.



#### Chain of Custody

Hyne currently has Chain of Custody (CoC) Product Certification for Hyne Araucaria from the Mary Valley and for Hyne Frame produced at our Tuan and Tumberumba mills. We also have CoC Product Certification for Hyne Beam 17C, Hyne LGL, Hyne LVL and Hyne OS'Brace. This Chain of Custody Certification guarantees for Hyne's customers and end-users of Hyne products that the products have been sourced from softwood plantation forests that comply with the Australian Forest Standard (AFS/PEFC).

#### For additional information visit

[www.hyne.com.au](http://www.hyne.com.au)

[www.greensmart.com.au](http://www.greensmart.com.au)

[www.forestrystandard.org.au](http://www.forestrystandard.org.au)

[www.naturallybetter.com.au](http://www.naturallybetter.com.au)

For more info call us on **1300 30 4963**, email [info@hyne.com.au](mailto:info@hyne.com.au) or visit [hyne.com.au](http://hyne.com.au)