

OUTDOOR LIVING

Check all untreated timber, under pavers and in surrounding soil.
LOOK FOR: SHELTER TUBES, TUNNELS, FLIGHT HOLES

INTERNAL

Check for softening in timbers, a papery finish, and listen out for any new creaks in floorboards.
LOOK FOR: SHELTER TUBES, TUNNELS, FECAL DUST

TREES

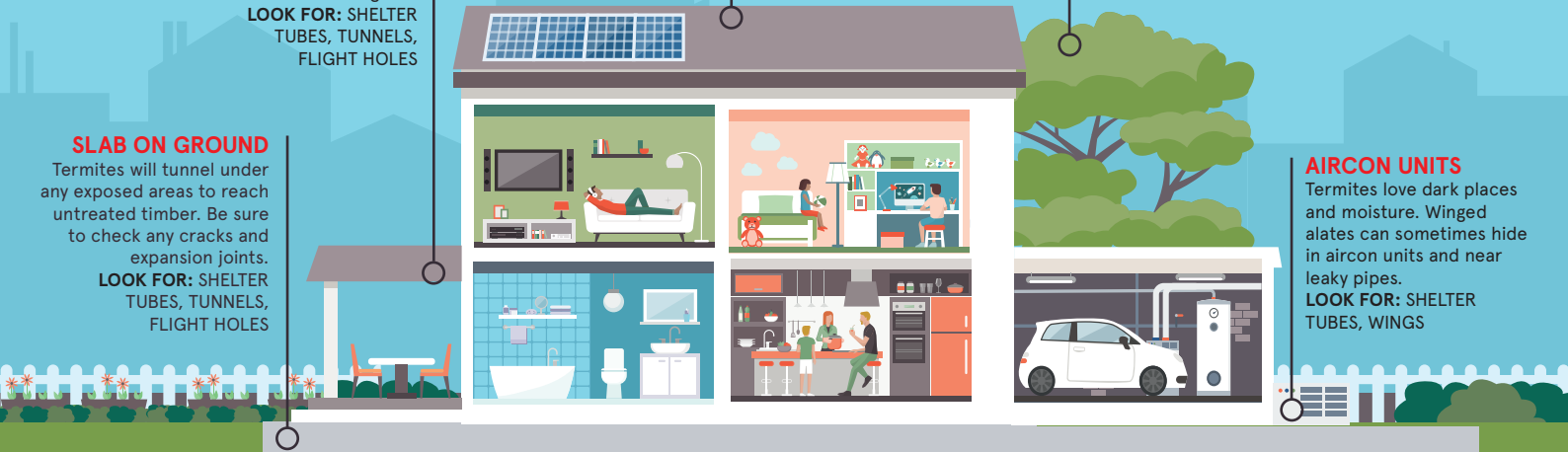
Remove all dead trees and limbs. Termites can move from the garden to your home.
LOOK FOR: TUNNELS AT BASE, FLIGHT HOLES, WINGS

SLAB ON GROUND

Termites will tunnel under any exposed areas to reach untreated timber. Be sure to check any cracks and expansion joints.
LOOK FOR: SHELTER TUBES, TUNNELS, FLIGHT HOLES

AIRCON UNITS

Termites love dark places and moisture. Winged alates can sometimes hide in aircon units and near leaky pipes.
LOOK FOR: SHELTER TUBES, WINGS



Termite Protection Your Home Checklist.

WHAT TO LOOK FOR...

SHELTER TUBES

To maintain high humidity and to protect themselves from sunlight and predators termites will travel in shelter tubes. Shelter tubes enable termites to reach and maintain contact with sources of food that are otherwise out of reach to them.

SUBTERRANEAN TUNNELS

The most widespread *Coptotermes acinaciformis* lives in the top 200mm of soil. Other species will build closer to the surface and you may see mounds or tunnel entrances in the top of the soil.

FLIGHT HOLES

When termites are ready to build a new colony they will create horizontal tunnels for the winged alates to fly from. Once the alates fly from the nest to create a new colony the remaining termites will plug the hole with mud.

FECAL DUST

Once termites have had a feast on unprotected timber they'll sometimes leave evidence behind. You may find fecal dust accumulating on surfaces around the timber or it may fall when the wood is tapped or disturbed.

WINGS

Once alates have flown from the original colony they will pair off, drop to the ground and shed their wings where they'll begin setting up a new nesting site.

DATE	DECK	GARDEN	INSIDE	PIPES	SOIL/ SLABS